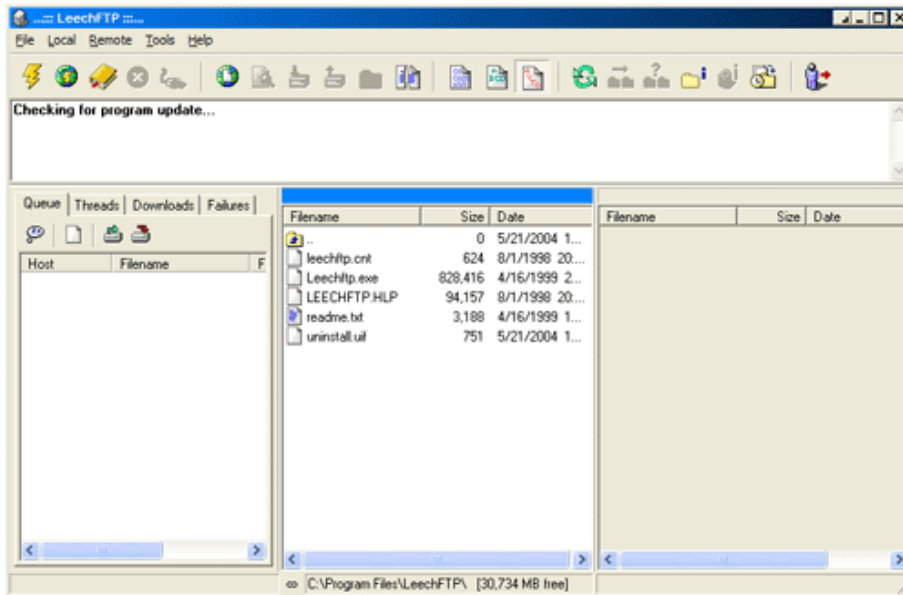


UPLOADING YOUR SITE TO A SERVER USING LEECHFTP

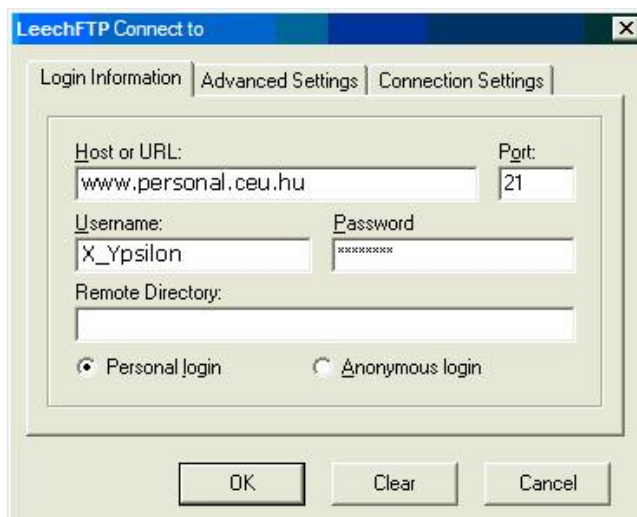
As you open LeechFTP from Novell Delivered Applications, you will see the following window:



Click the icon that looks like a lightning bolt in the top left side of the program window. A connection window will pop up. You now need to enter your web hosting account information in this box. For your CEU account, it will look something like this:

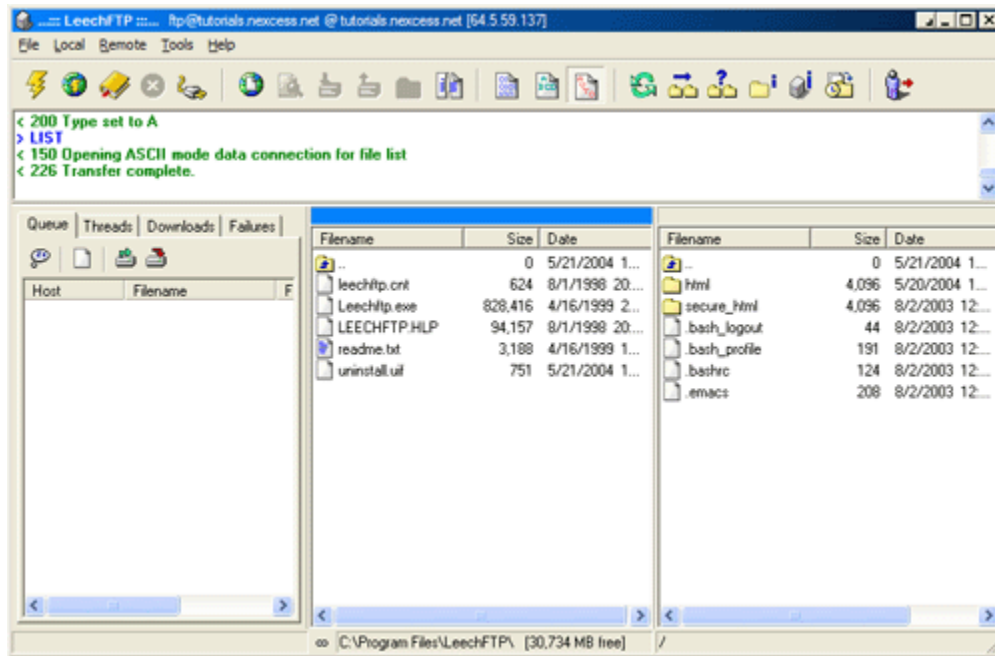
- *Host or URL: www.personal.ceu.hu*
- *Username: X_Ypsilon*
- *Password: password*

Those should be the only fields you have to worry about. You don't need to mess with the other tabs either. Once you have all the fields filled out, your screen should look like this:





Click on the 'OK' button to connect.

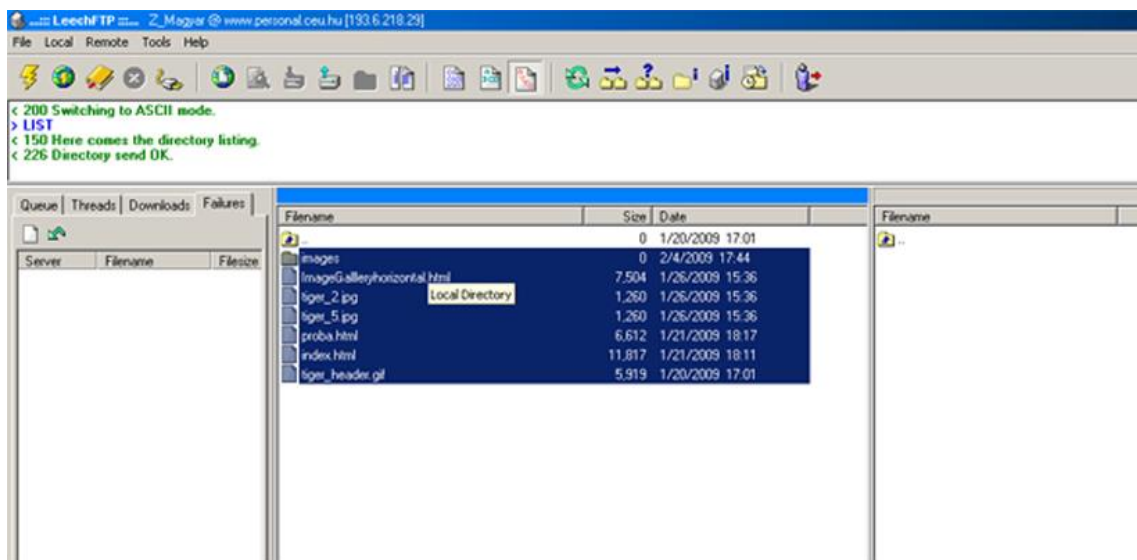
Once the FTP program makes a connection, your screen should look like this:

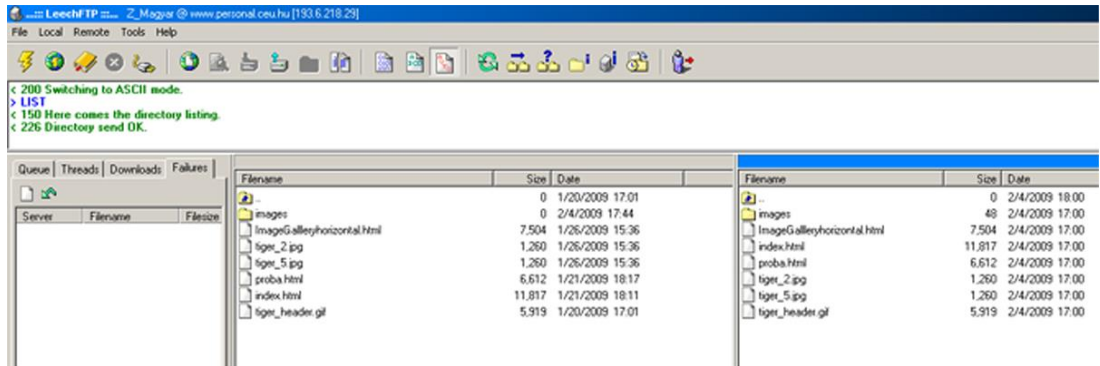


The list of files/folders on the **left hand side** is the view of your local machine (**Local Directory**). The list of files/folders on the **right hand side** is the view of your web hosting account (**Remote Directory**).

To upload your site;

- select the files from the folder on your local machine or network (e.g. P drive).
- right click on the selected files and select from the upcoming menu Upload Files or use the green up arrow button  on the menu bar.
- Select the Remote Directory on the right hand side and then click the Refresh button  on the menu bar to view the just uploaded files.





Another important and often overlooked note is that you must have a file named index.html or index.htm which acts as your homepage. When a person types in http://www.personal.ceu.hu/students/09/X_Ypsilon/ our web server will look for the file named index.html or index.htm first and will load that page.

